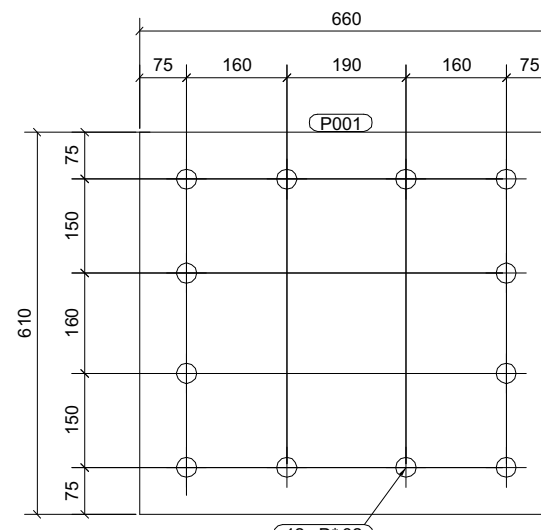
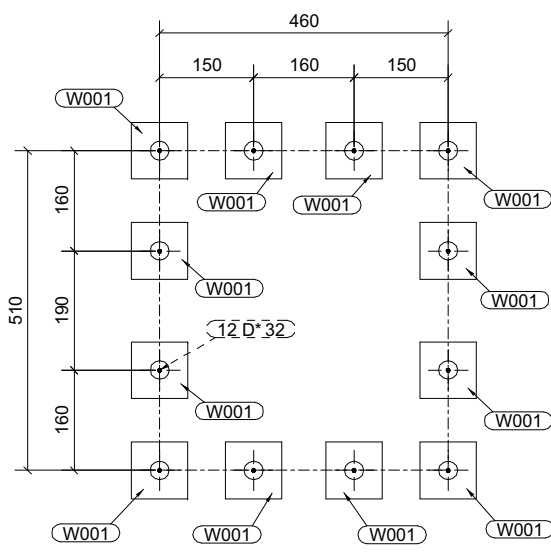
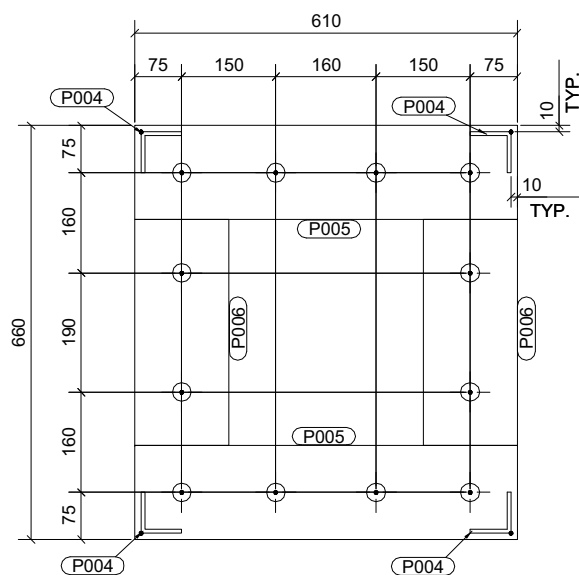
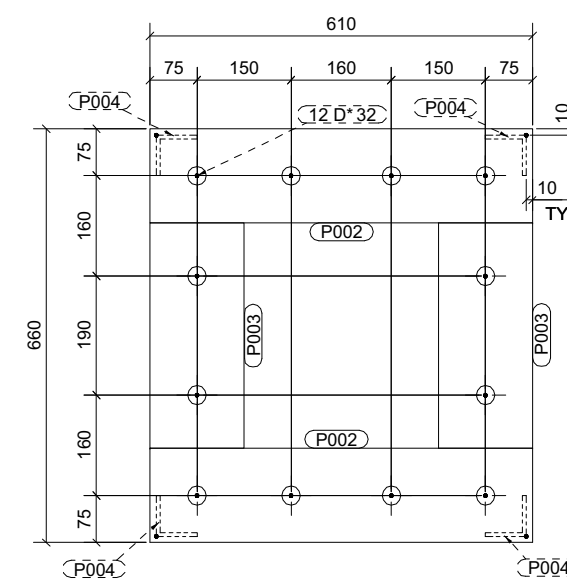
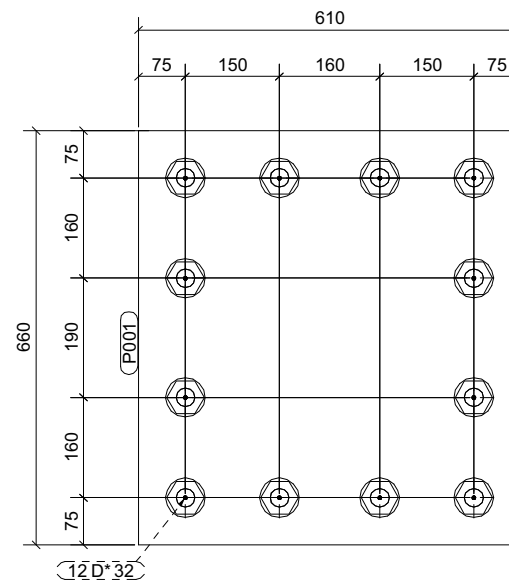
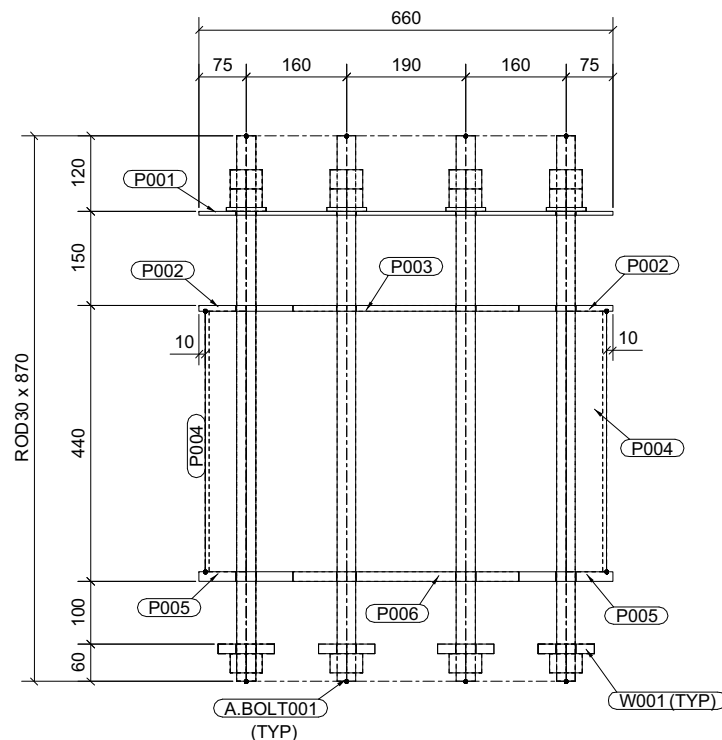
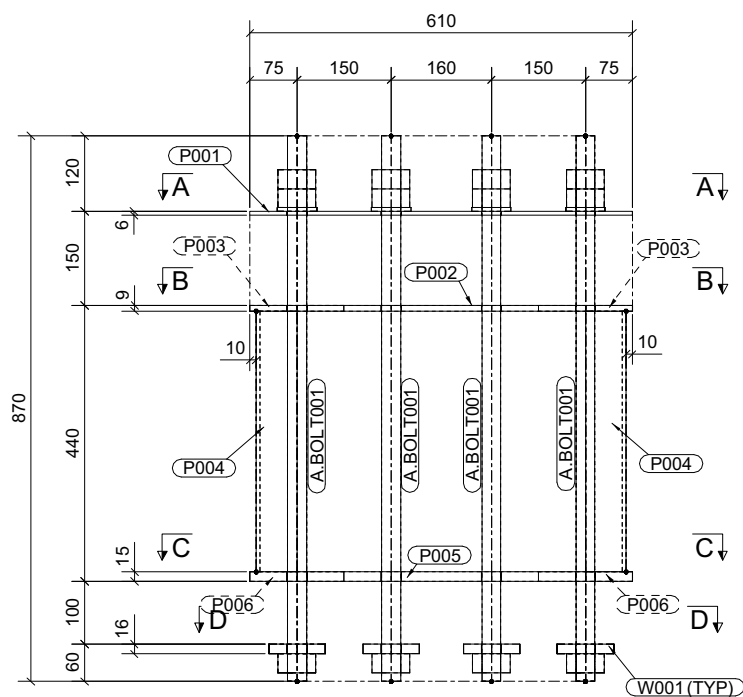


BILL OF MATERIALS LIST

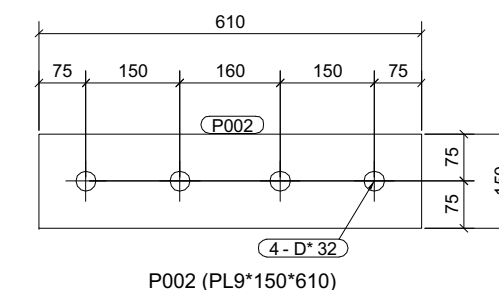
MARK	DESCRIPTION	LETH (mm)	QTY UNIT	TOTAL	WEIGHT (kg)	MATL	REMAR
	5 - ANCHOR - SC36/BP14F						
P001	PLT8*610	660.0	1	1	19.0	SS400	
P002	PLT9*150	610.0	2	2	12.9	SS400	
P003	PLT9*150	360.0	2	2	7.8	SS400	
P005	PLT15*150	610.0	2	2	21.5	SS400	
P006	PLT15*150	360.0	2	2	12.7	SS400	
P004	L65*65*6	416.0	4	4	9.8	SS400	
A.BOLT001	ROD30	870.0	12	12	55.3	SS400	
W001	PLT16*90	90.0	12	12	12.2	SS400	

Total Weight : 151.15

Total Weight for 5 Qty : 755.75

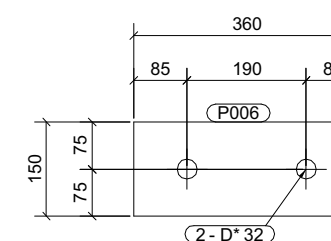


A-A



P002 (PL9*150*610)

B-B



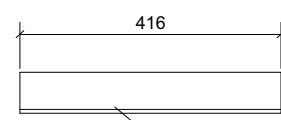
P006 (PL15*150*360)

C-C

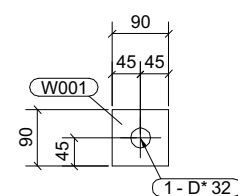
D-D

P001 (PL6*610*660)

P005 (PL15*150*610)



P004 (L65*65*6*416)



W001 (PL16*90*90)

NOTES

- FOR ANCHOR BOLTS : ASTM A307 GRADE B OR EQUIVALENT
FOR NUTS : ASTM A563 GRADE A HEAVY HEX NUT OR EQUIVALENT
FOR WASHERS : ASTM F 436 (HARDENED STEEL WASHER)
- ANCHOR BOLTS, NUTS AND WASHERS SHALL BE HOT DIP GALVANISED
- FULL PENETRATION WELDING SHOULD BE APPLIED FOR PLATE TO PLATE

REV.	DESCRIPTION	Date	Drawn	Checked	Approved
A	ISSUED FOR APPROVAL				

ANCHOR FRAME

Company document classification	Size	Scale	Drawing Number	Rev
	841:594	1:5		A

5 No ANCHOR REQD. AS DRAWN MKD' - SC36/BP14F